

**H2X** *FITNESS  
SWIM SPAS*



WATER TO THE EXTREME™



RELAX. IT'S  
**Master  
Spas®**





WATER TO THE EXTREME™

# WIN YOUR DAY

## INTRODUCING THE SWIM SPA THAT GIVES YOU POWER OVER YOUR WELLNESS

Exercise and entertain in the convenience and privacy of your backyard — without the upkeep of a traditional pool. With an H2X Fitness Swim Spa, you will be able to swim, jog and work out against the water current created by our innovative jet system. Enjoy the built-in therapy of the contoured seating and massaging jets, all designed so you can own your wellness — and win your day.

### MOVE BETTER

The H2X Fitness Swim Spa helps you get active and stay active. Enjoy swimming, walking, rowing and fitness activities.

### FEEL BETTER

Together, premium therapy jets and warm water deliver the ultimate in relaxation.

### LIVE BETTER

The H2X Fitness Swim Spa series helps you achieve balance with your health, life and family — year-round.



TRAINER 15 D

# FITNESS

## SWIM AND EXERCISE WITH CONVENIENCE

H2X Fitness Swim Spas give you the freedom to enjoy effective, low-impact workouts — without the frustration of a fitness center. Once in the water, you'll find that H2X models have a large, flat floor with no hidden obstacles, making it the choice for a variety of fitness exercises. With the jets off, you can experience the benefits of resistance training and range-of-motion exercises. Water buoyancy naturally makes exercising easier on the joints and this approach offers a total mind and body workout that is effective, yet gentle.

### SWIM

Enjoy a continuous swimming experience with an H2X Fitness Swim Spa. Thanks to an adjustable jet system, a flow of water creates resistance so you can move — without actually moving. Swim, jog or practice drills without having to turn. And you have the power to set the pace of your workout by changing the speed settings. Everyone from novice swimmers to competitive triathletes will enjoy the experience that mimics open-water swimming.



*"This spa is a dream come true. I can swim anytime, on my own terms, without worrying about scheduling or the cleanliness of public pools — and I can use it for way longer than just two summer months!"*

— Vesna, Ontario



CHALLENGER 15 D



CHALLENGER 15 D



## FITNESS

The buoyancy of water reduces stress on the joints, improves range of motion and offers natural resistance. All fitness levels can benefit from using the H2X for aerobics, strengthening and stretching.



## TRAINING

The H2X Fitness Swim Spa allows you to train year-round in an environment where you control the resistance and water temperature. Whether you are a first-time triathlete or a seasoned marathoner, you can progress to higher-level training without additional stress.



## CONVENIENCE

With an H2X, fitting in a workout or recovery session is easy. The H2X is just steps away, year-round, so you don't have to worry about traffic or pool hours.



*"The aquatic workout kit is really fun! I just had back surgery three months ago and needed a low-impact workout and a way to strengthen my core. I've lost weight and my back feels better! Plus, the jets help massage my back with the high heat. I'm definitely motivated to workout!"*

— Korinne, Texas

## H2XERCISE FITNESS SYSTEM

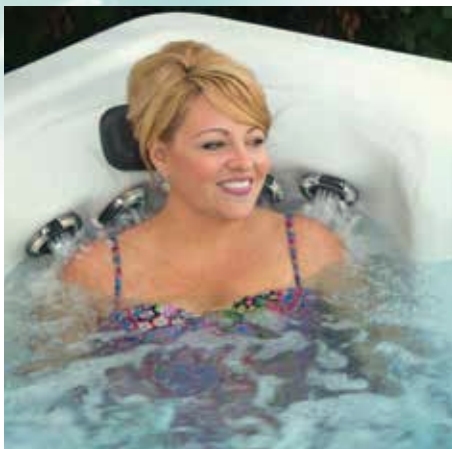
Enjoy the benefits of aquatic resistance training with the H2Xercise Fitness System. With the purchase of your swim spa, you'll receive a rowing kit, resistance bands and the H2Xercise Aquatic Workout book by aquatic fitness/conditioning expert, Dr. Rick McAvoy.



# THERAPY

## RELAXATION FOR YOUR BODY AND MIND

Life can be busy but it should not get in the way of taking time for yourself. The H2X Fitness Swim Spa provides a calming retreat where you can find relief from muscle aches and achieve peace of mind. Experience the best of hydrotherapy with adjustable temperature controls and thoughtful jet placement.



### RELAX

Experience the reverse molded StressRelief Neck and Shoulder Seat™, available on select models. Specially designed shoulder jets deliver a tension-relieving massage where it's needed most, across the neck and shoulders.

### RECOVER

The jets of the Xtreme Therapy Cove deliver a complete therapeutic massage for your lower back, hips, thighs and calves. The warm water also improves circulation, delivering nutrients and oxygen to tired muscles.

### RENEW

Taking time at the end of a busy day can help you ease stress, improve your mood and sleep better. Spending 20 minutes in the therapy seats of an H2X is time to make yourself and your wellness a priority.

### MASTER BLASTER® FOOT MASSAGE THERAPY

Our exclusive Master Blaster Foot Massage Therapy System uses a cluster jet with 14 individual nozzles designed to rejuvenate your body through an encompassing foot massage. Master Blaster Therapy comes standard on the Challenger 19 D, Trainer 19 and Trainer 19 D.





TRAINER 15 D

## SET THE MOOD FOR RELAXATION

The LED lights beautifully illuminate the water, the cascading waterfalls and topside controls. With a spectrum of options, you choose the best hue for your night-time swim spa experience.



*“My wife and I both have arthritis at the knees and the exercise we get in the Trainer 15 Deep, along with the spa section for just relaxing, has exceeded our expectations.”*

— Gary, California

## MAGNETIC THERAPY

Our exclusive, patented Master Force™ Bio-Magnetic Therapy System offers the benefits of magnetic therapy in the comfort of a swim spa. Magnetic therapy has been used for centuries to help relieve pain, improve circulation, reduce swelling and alleviate stiffness. Today, more and more doctors and physical therapists are using magnetic therapy for the treatment of back problems, arthritis and sports injuries.

That's why Master Spas, after extensive research and development, chose to combine the proven benefits of hydrotherapy with the pain relieving comfort of bio-magnetic therapy. We strategically place magnets behind the StressRelief Neck and Shoulder Seat™ to provide relief to your pressure points.\*

\*Available on select models.





# RELAX

## EASY TO OWN, EASY TO ENJOY

At Master Spas, we build year-round use and energy savings into our swim spas. The foam insulation of the H2X is environmentally friendly and exceeds even the most stringent efficiency regulations. It makes the H2X one of the most energy-efficient swim spas on the market, saving you money on your monthly utility bill.

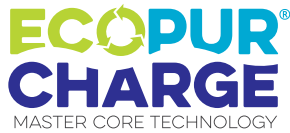
By expanding to tightly seal and secure all areas under your swim spa, our insulation:

- Prevents heat loss
- Retains its shape and efficiency for the life of the product
- Resists mold and mildew
- Reduces the noise of your swim spa
- Produces no ozone harming off-gas and is environmentally safe





## CLEAN, REFRESHING WATER



At Master Spas, we want you to spend more time enjoying your swim spa and less time taking care of it. That's why we developed the exclusive and patent-pending EcoPur® Charge Master Core Technology water purification system.

Taking a hint or two from Mother Nature, the EcoPur® Charge water purification system incorporates a specific blend of minerals into one of the filters in your swim spa. As the water rushes into, over and through EcoPur® Charge, large contaminants are first filtered from the water. Then, the water interacts with

a special blend of minerals, including copper (Cu) and zinc (Zn), creating an electro-chemical reaction that helps eliminate many microorganisms and removes heavy metals from the water. This results in sparkling water that feels softer and doesn't have the harsh chemical smell associated with common

systems. Every H2X Fitness Swim Spa by Master Spas also features an advanced ozone system that kills pathogens and microorganisms, while destroying organic materials. It also oxidizes non-organic contaminants to keep your water clean and refreshing every time you use your swim spa.



### MAST3RPUR™ WATER MANAGEMENT SYSTEM

The synergistic blend of three proven natural sanitizers provides water quality and swim spa care not found in any other swim spa, including those with salt systems. The optional Mast3rPur™ Water Management System dramatically reduces harsh chemical consumption, like chlorine, while removing many heavy metals and chloramines for water that looks crystal clear, smells fresh and has a silky feel. This innovative, exclusive benefit is due to the power of three elements:



When absorbed in water, **ozone** kills pathogens and microorganisms, destroys organics and oxidizes non-organic contaminants.



When germicidal **UV-C light** is exposed to water, it inactivates microorganisms and breaks down chloramines.



The unique combination of **copper and zinc** in the patent-pending EcoPur® Charge filters creates an electro-chemical reaction to eliminate many microorganisms and remove heavy metals such as lead and mercury.

Each of the three elements are proven effective water management tools but when they are combined, their synergy makes them dramatically more effective through a chemical reaction known as Advanced Oxidation Process (AOP). AOP is superior to other systems because it produces powerful hydroxyl radicals that maximize disinfection and reduce chloramines fast and effectively. Clean, clear, fresh-smelling and better-feeling water is available now with less work...another innovative, exclusive benefit only available through Master Spas.

# SEE THE DIFFERENCE



## VELOCITY INJECTOR PLATE TECHNOLOGY

We want you to get the most out of your swim spa experience. That's why Master Spas designed the Velocity Injector Plate (VIP) Technology. The unique design of the plate takes advantage of the flow of water to control turbulence and increase water volume. This means that you will feel the difference from the first stroke. And, because it changes the way the water is released into the swim spa, the system offers much better performance than standard jetted swim spas.

## MAKE THE DISTINCTION

Go against the current and set the course for your fitness journey. With a diverse range, there is an H2X Fitness Swim Spa that will give you the convenience and motivation to achieve your goals.

FEATURES	CHALLENGER PRO	CHALLENGER SERIES	TRAINER SERIES	TRAINER 12	THERAPOOL SERIES
Ideal for Fitness/Therapy/Recreation	✓	✓	✓	✓	✓
Swim Level					
Propulsion System	6 Airless VIP Jets	6 Airless VIP Jets	4 Air-Injected VIP Jets	4 Air-Injected VIP Jets	2-3 Flow Stream Jets
Water Current Speed	Programmable, 25 levels	Programmable, 25 levels	Adjustable	Adjustable	Dual Speed
Pumps	4	3-5	2-4	2	2
Models with both a Swim Spa & Hot Tub	—	✓	✓	—	—
Xtreme Therapy Cove	✓	✓	✓	✓	—
Master Blaster® Foot Massage Therapy*	—	✓	✓	—	—
Jetted Hydrotherapy Seats	✓	✓	✓	✓	✓
StressRelief Neck and Shoulder Seat™*	✓	✓	✓	—	✓
Master Force™ Bio-Magnetic Therapy System*	✓	✓	✓	—	✓
EcoPur® Charge Filtration	✓	✓	✓	✓	✓
Ozone System	✓	✓	✓	✓	✓
Stainless Steel Jets	✓	✓	✓	✓	✓
Water Features	✓	✓	✓	✓	✓
LED Lighting*	✓	✓	✓	Colorscape	✓
H2Xercise Fitness System	✓	✓	✓	✓	✓

\*On select models



## CHALLENGER SERIES

The Challenger bridges the gap between fitness and performance, so you can take your training to the next level. Challenger models feature an innovative jet system that does not introduce air into the water stream. With VIP Technology and six strategically placed jets, the system creates a smooth, wide current of water that can challenge a novice or elite swimmer with the press of a button. Plus, experience the hydrotherapy and relaxation you want and need.

### AQUASPEED VSP™

The AquaSpeed VSP touchscreen display features easy-to-use controls that allow you to set the speed of the current and program a workout. With 25 speed settings, you can dial in your pace for endurance efforts or vary it to benefit from interval training.

**Who will love it:** Athletes and fitness enthusiasts

## TRAINER SERIES

H2X Fitness Trainers deliver a swimming and exercise experience superior to traditional air-injected jetted swim spas. Combining science and engineering, the VIP Technology creates a more efficient flow of water to swim, run or walk against. Hydrotherapy and relaxation are built-in, with the Xtreme Therapy Cove, massaging jets and ability to adjust water temperature to your comfort level.

**Who will love it:** Fitness enthusiasts and therapy seekers

## THERAPOOL SERIES

Ideal for fitness and exercise, H2X Fitness Therapool models help you get active and stay active. Therapool models feature up to three flow stream jets that complement the natural resistance of water so you get the most out of your workout.

Hydrotherapy and relaxation are built-in, with the contoured seating, massaging jets and ability to adjust the water temperature up to a soothing 99 degrees Fahrenheit.

**Who will love it:** Fitness and therapy seekers

# Challenger 19 D

Elite Performance, Airless VIP, Programmable Speed



**TWO BODIES OF WATER, TWO DIFFERENT TEMPERATURES**  
Set the pace of your workout with the programmable variable speed system. Swim, jog, walk or exercise in the uninhibited swim area, with the water set to a personal comfort zone in the 80s. On the other side, settle into the hot tub with the temperature set up to 104°F. This full-size hydrotherapy hot tub has 31 jets, ergonomic seating and was designed to give your mind, body and spirit a thorough rejuvenation. Say good-bye to the tensions, aches and stresses of the day.



Dimensions	231" x 94" (587 cm x 239 cm)
Depth	60" (153 cm)
Water Capacity	2,285 Gallons (8,650 L)
Weight: Dry/Full	3,435 lbs. (1,558 kg) / 23,790 lbs. (10,791 kg)
Propulsion System	Airless VIP Technology
Power Requirement	100 Amp System
Pumps	5
Stainless Steel Jets	50 (Including 6 Airless VIP Jets and 1 Master Blaster®)
Water Features	5
Ozone System	Standard
Filtration	EcoPur® Charge
LED Lighting	Waterline
Exclusive Features	AquaSpeed VSP™ StressRelief Neck and Shoulder Seat™ Master Force™ Bio-Magnetic Therapy System
Exclusive Accessories	H2Xercise™ Fitness System
Premium Options	Fusion Air Sound System Mast3rPur™ Water Management System Nonslip, Comfort Floor System Axis® Cover System
Listing Number	9917

# Challenger 18 D PRO

*Elite Performance, Airless VIP, Programmable Speed*



The all-new Challenger 18 D PRO allows you to swim your best and maximize your training. The fastest jetted swim spa from Master Spas, the Challenger 18 D PRO has a top current speed of 1:10/100 meters. Three swim pumps create a smooth, wide flow of water that you control. Whether you are a competitive swimmer or just want to reach a personal best, you can control the pace of your swim. Set intervals, using the AquaSpeed VSP™ system, or cruise for a strength swim.

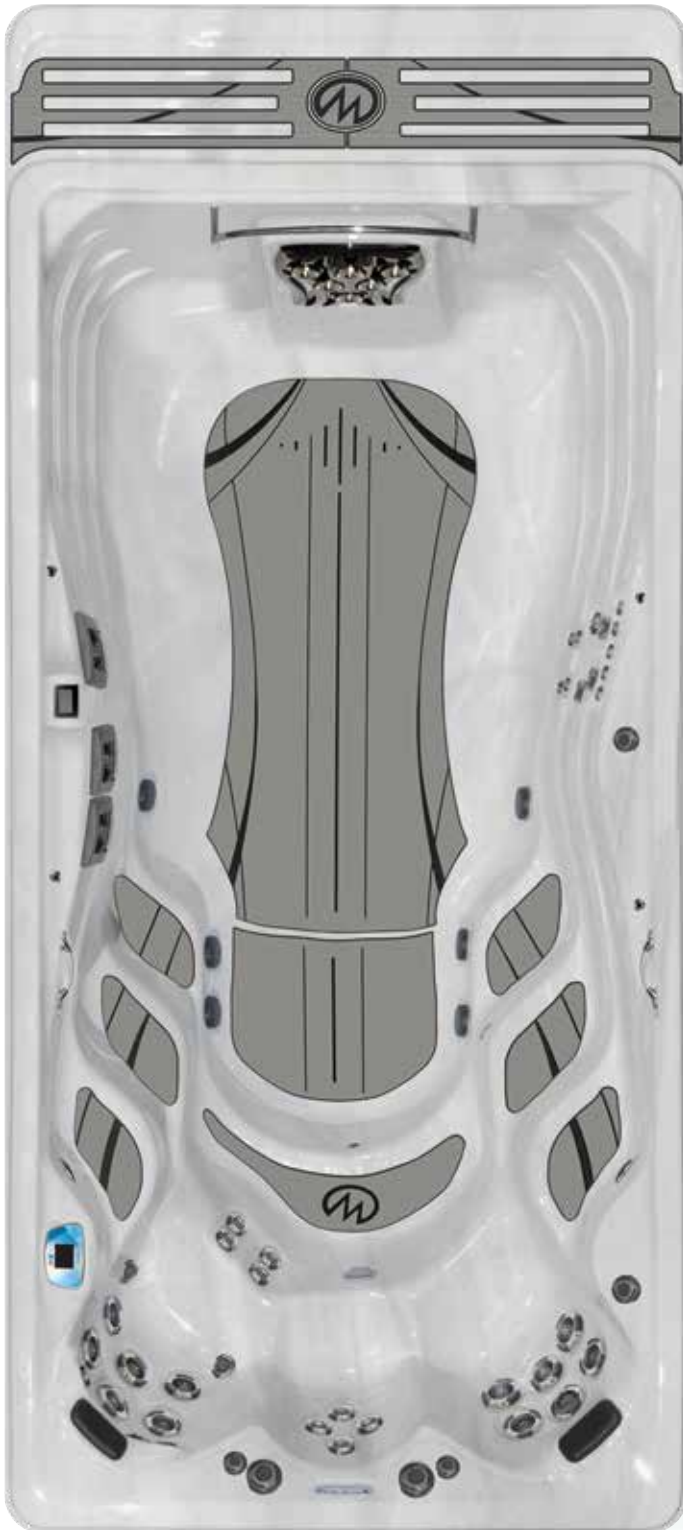


Dimensions	215"x 94" (547 cm x 239 cm)
Depth	60" (153 cm)
Water Capacity	2,080 Gallons (7,874 L)
Weight: Dry/Full	2,840 lbs (1,288 kg) / 21,115 lbs (9,578 kg)
Propulsion System	Airless VIP Technology
Power Requirement	80 Amp System
Pumps	4
Stainless Steel Jets	45 (Including 6 Airless VIP Jets)
Water Features	5
Ozone System	Standard
Filtration	EcoPur® Charge
LED Lighting	Waterline
Exclusive Features	AquaSpeed VSP™ StressRelief Neck and Shoulder Seat™ Master Force™ Bio-Magnetic Therapy System Mast3rPur™ Water Management System
Exclusive Accessories	H2Xercise™ Fitness System
Premium Options	Fusion Air Sound System Nonslip, Comfort Floor System Axis® Cover System
Listing Number	9946



# Challenger 18 D

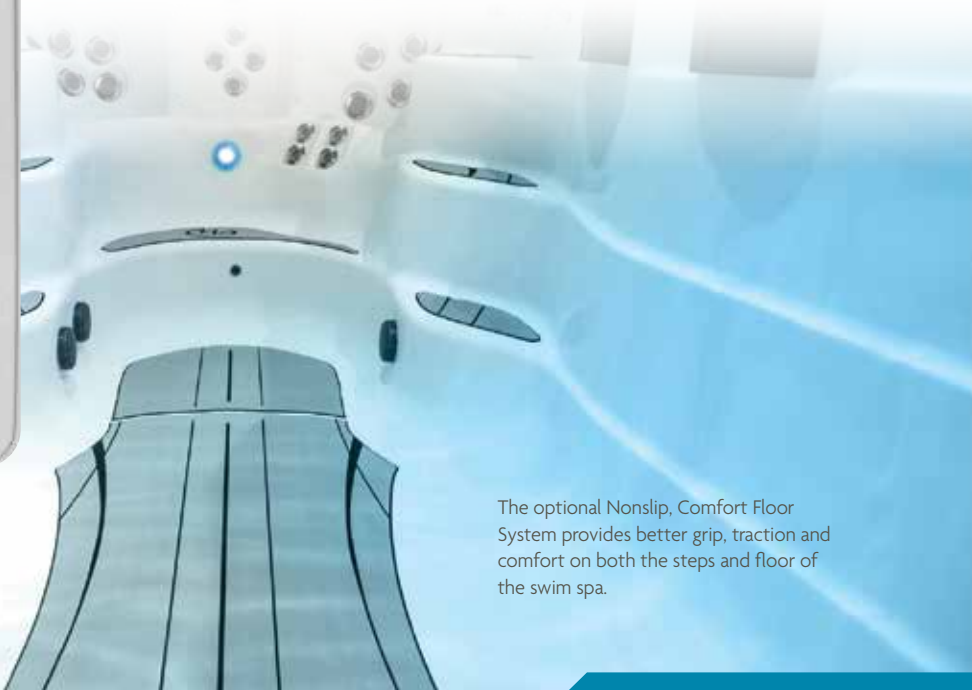
*Elite Performance, Airless VIP, Programmable Speed*



The Challenger 18 D features an uninhibited swim area and increased depth for buoyancy. With an airless jet system, this swim spa is ideal for endurance athletes, fitness enthusiasts and wellness seekers. The variable speed current allows you to set the pace, whether you want a challenging workout or recovery session. After a workout, you'll enjoy the relaxation and rejuvenation of the Xtreme Therapy Cove and contoured seats with massaging jets.



Dimensions	215" x 94" (547 cm x 239 cm)
Depth	60" (153 cm)
Water Capacity	2,080 Gallons (7,874 L)
Weight: Dry/Full	2,840 lbs. (1,288 kg) / 21,115 lbs. (9,578 kg)
Propulsion System	Airless VIP Technology
Power Requirement	50 Amp System
Pumps	3
Stainless Steel Jets	45 (Including 6 Airless VIP Jets)
Water Features	5
Ozone System	Standard
Filtration	EcoPur® Charge
LED Lighting	Waterline
Exclusive Features	AquaSpeed VSP™ StressRelief Neck and Shoulder Seat™ Master Force™ Bio-Magnetic Therapy System
Exclusive Accessories	H2Xercise™ Fitness System
Premium Options	Fusion Air Sound System Mast3rPur™ Water Management System Nonslip, Comfort Floor System Axis® Cover System
Listing Number	9916



The optional Nonslip, Comfort Floor System provides better grip, traction and comfort on both the steps and floor of the swim spa.

# Challenger 15 D

Elite Performance, Airless VIP, Programmable Speed



The Challenger 15 D features a large uninhibited area that is perfect for swimming, exercise and family fun. The Airless VIP Technology enhances the swim jet performance and a variable speed system allows you to customize the pace. Plus, when it comes to hydrotherapy, rehabilitation and relaxation, nothing compares to the Xtreme Therapy Seat and Xtreme Therapy Cove. The smallest footprint of any Challenger model, it's ideal for small backyards.



Dimensions	180" x 94" (457 cm x 239 cm)
Depth	60" (153 cm)
Water Capacity	1,930 Gallons (7,306 L)
Weight: Dry/Full	2,530 lbs. (1,148 kg) / 19,555 lbs. (8,870 kg)
Propulsion System	Airless VIP Technology
Power Requirement	50 Amp System
Pumps	3
Stainless Steel Jets	45 (Including 6 VIP Jets)
Water Features	5
Ozone System	Standard
Filtration	EcoPur® Charge
LED Lighting	Waterline
Exclusive Features	AquaSpeed VSP™ StressRelief Neck and Shoulder Seat™ Master Force™ Bio-Magnetic Therapy System
Exclusive Accessories	H2Xercise™ Fitness System
Premium Options	Fusion Air Sound System Mast3rPur™ Water Management System Nonslip, Comfort Floor System Axis® Cover System
Listing Number	9915



*"As a pool owner for 25 years, I am so glad that when it was time to replace it I decided to go with a swim spa instead. My Challenger 15 D not only gives me a great swim, but also is great for just relaxing and relieving stress. The thing that surprised me most was how much I actually used the fitness equipment and the great workouts you can get. As a two-time IRONMAN finisher, I obviously spend a lot of my time swimming, biking and running - but often times I neglect my upper body workouts due to lack of time. No more with the swim spa! Plus, no gym membership!"*

— James, Conesville, OH

# Trainer 19 & 19 D

High Performance, Air-injected VIP, Adjustable Speed



## TWO BODIES OF WATER, TWO DIFFERENT TEMPERATURES

Enjoy a swim and the full-body effects of aquatic exercise with water set to a personal comfort zone in the 80s. On the other side, settle into the hot tub with the temperature set up to 104°F. This full-size hydrotherapy hot tub has 31 jets, ergonomic seating and was designed to give your mind, body and spirit a thorough rejuvenation. Say goodbye to the tensions, aches and stresses of the day. The Trainer 19 is more than a sensation; it's your solution.



Dimensions	231" x 94" (587 cm x 239 cm)
19 Depth	51" (130 cm)
19 D Depth	60" (153 cm)
19 Water Capacity	2,055 Gallons (7,779 L)
19 D Water Capacity	2,285 Gallons (8,650 L)
19 Weight: Dry/Full	2,950 lbs. (1,338 kg) / 21,385 lbs. (9,700 kg)
19 D Weight: Dry/Full	3,215 lbs. (1,458 kg) / 23,570 lbs. (10,691 kg)
Propulsion System	Air-Injected VIP Technology
Power Requirement	100 Amp System
Pumps	4
Stainless Steel Jets	48 (Including 4 VIP Jets and 1 Master Blaster®)
Water Features	5
Ozone System	Standard
Filtration	EcoPur® Charge
LED Lighting	Waterline
Exclusive Features	StressRelief Neck and Shoulder Seat™ Master Force™ Bio-Magnetic Therapy System
Exclusive Accessories	H2Xercise™ Fitness System
Premium Options	Fusion Air Sound System Mast3rPur™ Water Management System Nonslip, Comfort Floor System Axis® Cover System
Listing Number	Trainer 19: 9600    Trainer 19 D: 1270



# Trainer 18 D

High Performance, Air-injected VIP, Adjustable Speed



Trainer 18 D features a large uninhibited area with increased depth for buoyancy that is perfect for fitness training, aquatic exercise and family fun. The VIP (Velocity Injector Plate) Technology improves the swim jet performance and increases water output for an enhanced exercise experience. With incomparable health rewards, hydrotherapy and relaxation, this swim spa offers a full measure of enjoyment.



Dimensions	215" x 94" (547 cm x 239 cm)
Depth	60" (153 cm)
Water Capacity	2,235 Gallons (8,460 L)
Weight: Dry/Full	2,710 lbs. (1,229 kg) / 22,275 lbs. (10,104 kg)
Propulsion System	Air-Injected VIP Technology
Power Requirement	50 Amp System
Pumps	2
Stainless Steel Jets	43 (Including 4 VIP Jets)
Water Features	5
Ozone System	Standard
Filtration	EcoPur® Charge
LED Lighting	Waterline
Exclusive Features	StressRelief Neck and Shoulder Seat™ Master Force™ Bio-Magnetic Therapy System
Exclusive Accessories	H2Xercise™ Fitness System
Premium Options	Fusion Air Sound System Mast3rPur™ Water Management System Nonslip, Comfort Floor System Axis® Cover System
Listing Number	1130

A TRUE YEAR-ROUND RETREAT  
Check out this customer's installation  
and video on our blog!  
[masterspas.com/blog/swim-spa-testimonial](https://masterspas.com/blog/swim-spa-testimonial)



# Trainer 15 & 15 D

High Performance, Air-injected VIP, Adjustable Speed



The Trainer 15 features a large uninhibited area that is perfect for family fun and exercise. Easier to maintain and with a smaller footprint, this swim spa is an ideal alternative to a traditional pool. Plus, when it comes to hydrotherapy, rehabilitation and relaxation, nothing compares to the Xtreme Therapy Seat and Xtreme Therapy Cove.



Dimensions	180" x 94" (457 cm x 239 cm)
15 Depth	51" (130 cm)
15D Depth	60" (153 cm)
15 Water Capacity	1,620 Gallons (6,132 L)
15D Water Capacity	1,895 Gallons (7,173 L)
15 Weight: Dry/Full	2,310 lbs. (1,048 kg) / 16,750 lbs. (7,598 kg)
15D Weight: Dry/Full	2,575 lbs. (1,168 kg) / 19,305 lbs. (8,757 kg)
Propulsion System	Air-Injected VIP Technology
Power Requirement	50 Amp System
Pumps	2
Stainless Steel Jets	43 (Including 4 VIP Jets)
Water Features	5
Ozone System	Standard
Filtration	EcoPur® Charge
LED Lighting	Waterline
Exclusive Features	StressRelief Neck and Shoulder Seat™ Master Force™ Bio-Magnetic Therapy System
Exclusive Accessories	H2Xercise™ Fitness System
Premium Options	Fusion Air Sound System Mast3rPur™ Water Management System Nonslip, Comfort Floor System Axis® Cover System
Listing Number	Trainer 15: 1430    Trainer 15 D: 1440

# Trainer 12

*High Performance, Air-injected VIP, Adjustable Speed*



The Trainer 12 includes aquatic fitness equipment, the H2Xercise™ Fitness System, for muscle-defining and strength-building exercises. Master Spas' exclusive Xtreme Therapy Seat and Cove delivers luxurious, head-to-toe, muscle massaging and mind-relaxing healing.



Dimensions	144" x 94" (366 cm x 239 cm)
Depth	51" (130 cm)
Water Capacity	1,245 Gallons (4,713 L)
Weight: Dry/Full	1,915 lbs. (869 kg) / 13,225 lbs. (5,999 kg)
Propulsion System	Air-Injected VIP Technology
Power Requirement	50 Amp System
Pumps	2
Standard Jets	54 (Including 4 VIP Jets)
Water Features	2
Ozone System	Standard
Filtration	EcoPur® Charge
LED Lighting	Colorscape
Exclusive Accessories	H2Xercise™ Fitness System
Premium Options	Fusion Air Sound System Nonslip, Comfort Floor System LED Lighting Axis® Cover System
Listing Number	8300





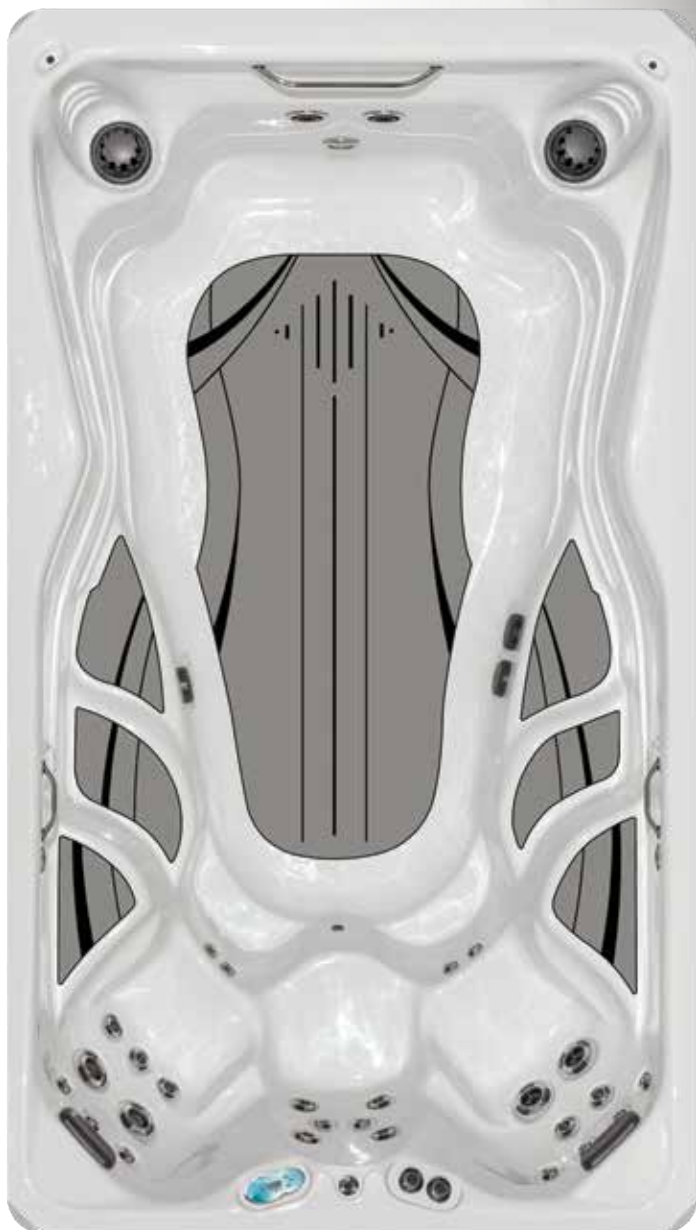
"My swim spa has been the best investment I've ever made. We use it every day and we enjoy knowing that we are getting great exercise and having so much fun without leaving our home."

— Steve, North Carolina



## Therapool 13

*Fitness Oriented, Air-injected Flow Stream, Dual Speed*



The largest model in the Therapool Series, the Therapool 13 has an uninhibited exercise area and therapy seating for the ultimate in wellness. It has 28 jets with two high-performance flow stream swim jets for resistance training and aquatic exercise. It comes standard with the H2Xercise™ Fitness System for rowing and strength training. Whether you want to exercise or simply relax, this is the perfect swim spa to re-energize your wellness routine and backyard.



Dimensions	156" x 90" (396 cm x 229 cm)
Depth	48" (122 cm)
Water Capacity	1,270 Gallons (4,807 L)
Weight: Dry/Full	1,785 lbs. (810 kg) / 13,120 lbs. (5,951 kg)
Propulsion System	Flow Stream Swim Jets
Power Requirement	50 Amp System
Pumps	2
Stainless Steel Jets	28 (Including 2 Flow Stream Swim Jets)
Water Features	2
Ozone System	Standard
Filtration	EcoPur® Charge
LED Lighting	Colorscape
Exclusive Accessories	H2Xercise™ Fitness System
Premium Options	Non-slip, Comfort Floor System
Listing Number	9914

# Therapool D

*Fitness Oriented, Air-injected Flow Stream, Dual Speed*



The Therapool D measures close to 8 ft. x 11 ft. and has a massive 60-inch depth. It has more than 50 jets with three high-performance flow stream swim jets for resistance training and aquatic exercise. It comes standard with the H2Xercise™ Fitness System for rowing and strength training. It also comes standard with waterline LED lighting, a waterfall and stainless steel jets. The Therapool D is the perfect swim spa for exercise, fitness and family fun.



Dimensions	132" x 94" (336 cm x 239 cm)
Depth	60" (153 cm)
Water Capacity	1,060 Gallons (4,013 L)
Weight: Dry/Full	1,720 lbs. (780 kg) / 11,860 lbs. (5,380 kg)
Propulsion System	3 Flow Stream Swim Jets
Power Requirement	50 Amp System
Pumps	2
Stainless Steel Jets	54 (Including 3 Flow Stream Swim Jets)
Waterfall	1
Ozone System	Standard
Filtration	EcoPur® Charge
LED Lighting	Waterline
Exclusive Features	StressRelief Neck and Shoulder Seat™ Master Force™ Bio-Magnetic Therapy System
Exclusive Accessories	H2Xercise™ Fitness System
Premium Options	Fusion Air Sound System Mast3rPur™ Water Management System Nonslip, Comfort Floor System Axis® Cover System
Listing Number	7600



INCORPORATE A SWIM SPA INTO A DECK  
See the full installation and video on our blog!  
[masterspas.com/blog/evette-rios-swim-spa-deck/](https://masterspas.com/blog/evette-rios-swim-spa-deck/)





“My wife wanted a swim spa to help her recover from a hip replacement and for general health improvement. She has used it nearly every day since it has been set up. But I have been in the swim spa as much as she has! I go in after my exercise routine to stretch and massage my back, shoulders and neck. We are both enjoying our swim spa.

— Keith, Oregon



# Therapool SE

*Fitness Oriented, Air-injected Flow Stream, Dual Speed*



This fitness spa is loaded with high-end features but at a surprisingly affordable price. The large flat floor is perfect for aquatic exercise and rehabilitation, while three high-performance flow stream swim jets provide a current for walking or running in place. At the end of your workout, slip into one of the ergonomic seats, letting the hydrotherapy jets help you recover and relax.



Dimensions	132" x 94" (336 cm x 239 cm)
Depth	51" (130 cm)
Water Capacity	925 Gallons (3,502 L)
Weight: Dry/Full	1,410 lbs. (640 kg) / 10,420 lbs. (4,726 kg)
Propulsion System	3 Flow Stream Swim Jets
Power Requirement	50 Amp System
Pumps	2
Standard Jets	21 (Including 3 Flow Stream Swim Jets)
Waterfall	1
Ozone System	Standard
Filtration	EcoPur® Charge
LED Lighting	Colorscape
Exclusive Features	StressRelief Neck and Shoulder Seat™ Master Force™ Bio-Magnetic Therapy System
Exclusive Accessories	H2Xercise™ Fitness System
Premium Options	Non-slip, Comfort Floor System LED Lighting Axis® Cover System
Listing Number	1470

## PREMIUM OPTIONS

**FUSION AIR SOUND SYSTEM** Listen to your favorite music while enjoying your swim spa with the Fusion Air Sound System, an available option for most swim spa models. This system includes four interior, water-resistant speakers and a subwoofer to maximize the sound quality. The Fusion Air Sound System connects quickly and easily through the Bluetooth of your phone or other device allowing you to stream your favorite station or playlist. You can even connect to your tablet, while using a waterproof case and mount, to stream your favorite movie or show.

**MAST3RPUR™ WATER MANAGEMENT SYSTEM\*** A synergistic blend of three proven natural water sanitizers combine to make a dramatically more effective chemical reaction known as Advanced Oxidation Process. This results in clean, clear, fresh-smelling and silkier water. The Mast3rPur option comes equipped with the QuietFlo Water Care System, a 24-hour circulation pump.



**NONSLIP, COMFORT FLOOR SYSTEM** Continuing our trend to make the best even better, we've raised the bar with the optional Nonslip, Comfort Floor System. This system provides better grip, traction and comfort on both the steps and floor of the swim spa, making our swim spas as safe and easy as possible to use while getting in, out or exercising.

**LED LIGHTING** LED lighting comes standard on most H2X models including waterfall LEDs, illuminated waterfalls and topside controls. Optional lighting is available for Therapool SE and Trainer 12.



**AXIS® COVER SYSTEM\*** Available exclusively for all Master Spas swim spas, the Axis Cover System makes handling your swim spa cover easy! This superior, patent-pending cover rolls to the end of your swim spa, without needing to be removed. Made with five layers of insulation, this energy-efficient cover has a unique fastening system for a nice taut look. For added security, safety locks secure the cover in place when not in use. Available in two colors: Espresso Brown and Graphite Grey. To see the Axis Cover in action, visit [MasterSpas.com/axis](http://MasterSpas.com/axis).

## YOUR COLORS

Match the color of your swim spa with the skirting color of your choice for a distinctive combination that's truly your own. DuraMaster Premium™ polymer skirting is available in two colors and is so durable, it comes with a lifetime warranty.

### SHELL OPTIONS

Sterling Silver Marble



Sierra



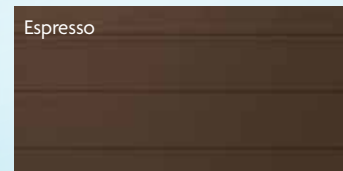
### SKIRT OPTIONS

DURAMASTER PREMIUM™ SKIRTING

Graphite Grey



Espresso



\*Available on most models.

MASTERSPAS.COM

WATER TO THE EXTREME™

MasterSpas.com



### MASTER SPAS CARES

Master Spas is dedicated to helping people live life better. Our faith and beliefs guide us in partnering with local and national organizations for the greater good.

**NAZ Children's Centre** A school in Rose Hall, Jamaica, that specializes in learning strategies to accommodate the neurodiversity of their students. Master Spas and our dealers were proud to be a part of building a new elementary school in 2013 and a new high school in 2018.

**The Crossing** A faith-based high school that turns at-risk youth into tomorrow's leaders. Master Spas provides vocational training for students.

**Michael Phelps Foundation** Works to promote healthy, active lives, especially for children, primarily by expanding the opportunities for participation in the sport of swimming. Programs include water safety, emotional wellness and grants for competitive swimmers.



### St. Jude Children's Research Hospital

Leading the way the world understands, treats and defeats childhood cancer and other life-threatening diseases.

**Lupus Foundation of America** Works to advance lupus research and improve life for people living with lupus.

**Michael J. Fox Foundation** Dedicated to finding a cure for Parkinson's disease and to ensuring the development of improved therapies.

**Tunnel to Towers Foundation** Honors military and first responders who continue to make the supreme sacrifice of life and limb for our country, founded in memory of Stephen Siller who laid down his life to save others on September 11, 2001.



H2X FITNESS SWIM SPAS ARE MANUFACTURED BY MASTER SPAS, AN AWARD WINNING COMPANY YOU CAN TRUST.



Master Spas® reserves the right to change product specifications or features without notice. Master Spas is a manufacturer of swim spas and related products and we stand behind every product we produce pursuant to those representations which are stated in our written limited warranty. Your dealer is an independent businessperson or company and not an employee or agent of Master Spas, LLC. We cannot and do not accept any responsibility or liability for any other representations, statements or contracts made by any dealer beyond the provisions of our written limited warranty. NOTICE: Although in some photos of the swim spas in the brochure the warning signage has been removed from the photos (for photographic purposes only) or is not visible, such warning signage should not be removed from the units at any time. REMINDER: Never allow anyone to dive into a swim spa. Always enter feet first. Master Spas, H2X, EcoPur, Master Blaster and Axis are registered trademarks of Master Spas, LLC. Patents: masterspas.com/patents

