



Your **passport** to relaxation.



Bar Harbor LE

Everything you need in a hot tub, the Bar Harbor LE provides plenty of seating including a lounger. Enjoy delightful features such as 40 therapeutic jets, backlit cupholders and a cascading waterfall.

Dimensions:	86" x 86" x 35" (218 cm x 218 cm x 89 cm)
Weight (Dry/Full):	660 lbs (299 kg) / 4,840 lbs (2,195 kg)
Gallons:	390 Gallons (1,476 L)
Power Requirements:	240 V / 50 Amp
Seating Capacity:	5
Stainless Steel Jets:	40
Pumps:	2
Water Features:	1
Filtration:	EcoPur® Charge
LED Lighting:	Colorscape Light
Exclusive Feature:	Ozone System Backlit Cupholders
Listing Number:	1770

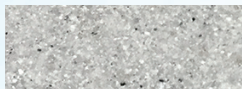
QUALITY CONSTRUCTION

The unibody construction is made with high-density polyethylene, which produces a durable, lightweight and scratch-resistant hot tub.

SHELL OPTIONS

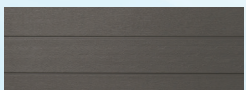


Sea Salt

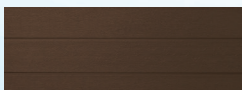


Pebble Beach

SKIRTING OPTIONS DuraMaster Premium™



Graphite Grey



Espresso

RELAX, IT'S MASTER SPAS

Getaway Hot Tubs by Master Spas make owning a relaxing hot tub exactly what it should be: stress free. Master Spas' quality is found in every inch of a Getaway Hot Tub, from the energy efficient insulation to the high quality controls.

ECOPUR® CHARGE

All Getaway Hot Tubs feature patent-pending EcoPur® Charge Master Core Technology, a water purification system that keeps the water sparkling clean and assures that the quality of your water is superior to all industry standards.



MADE IN THE USA



MasterSpas.com

